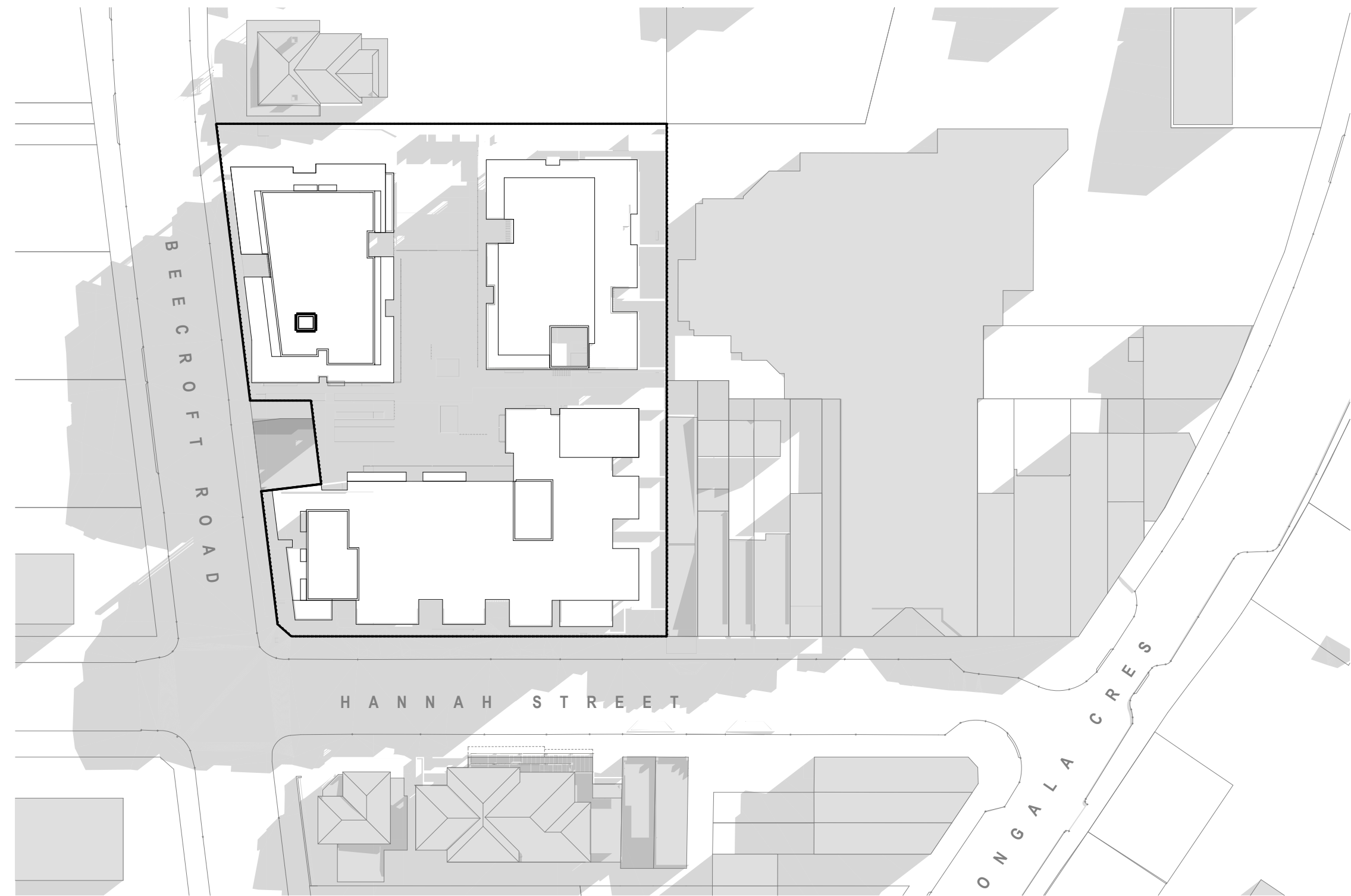
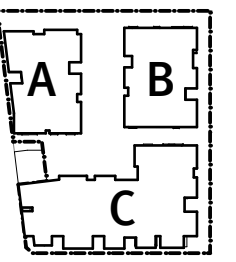
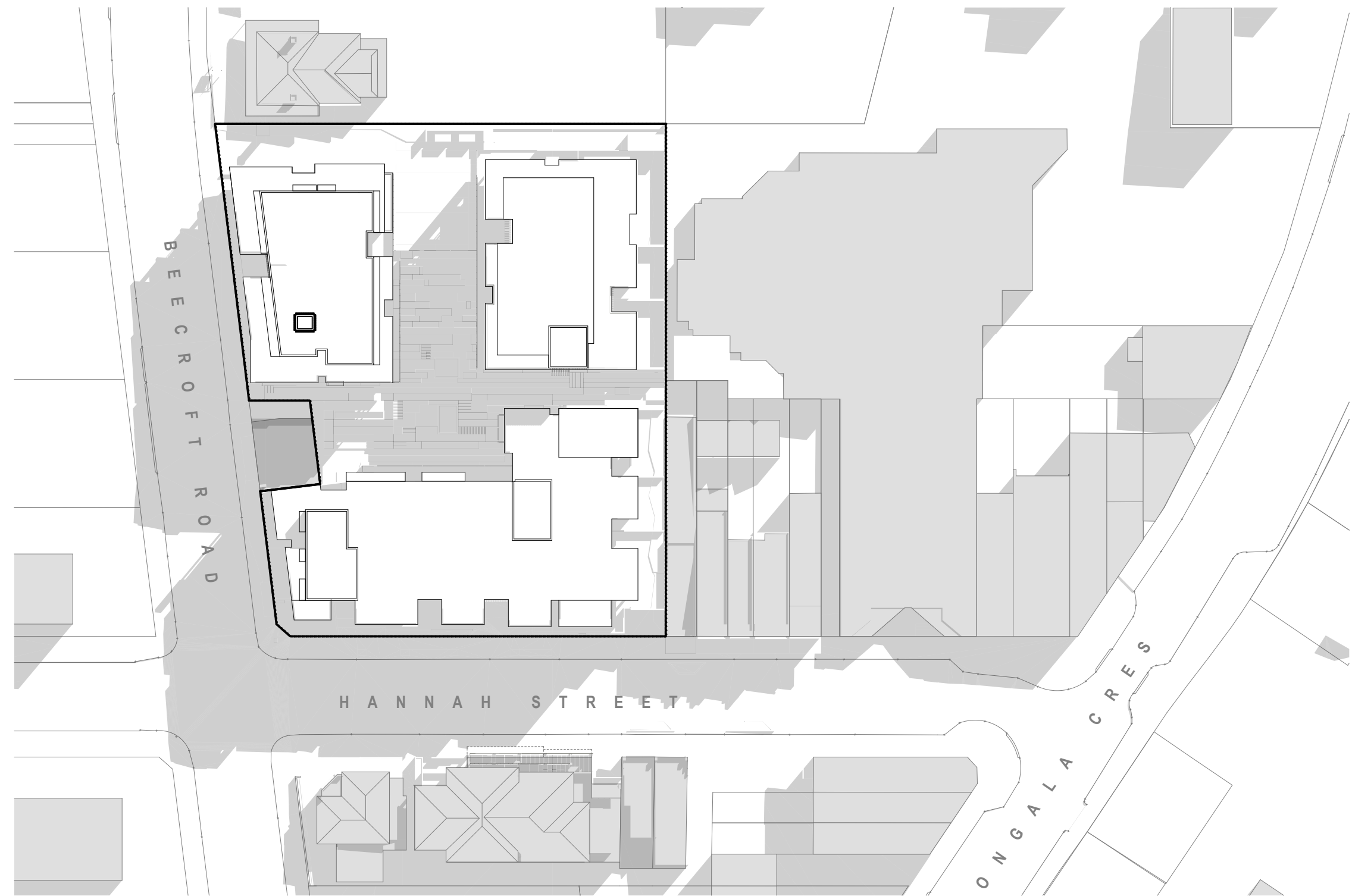


NOT FOR CONSTRUCTION

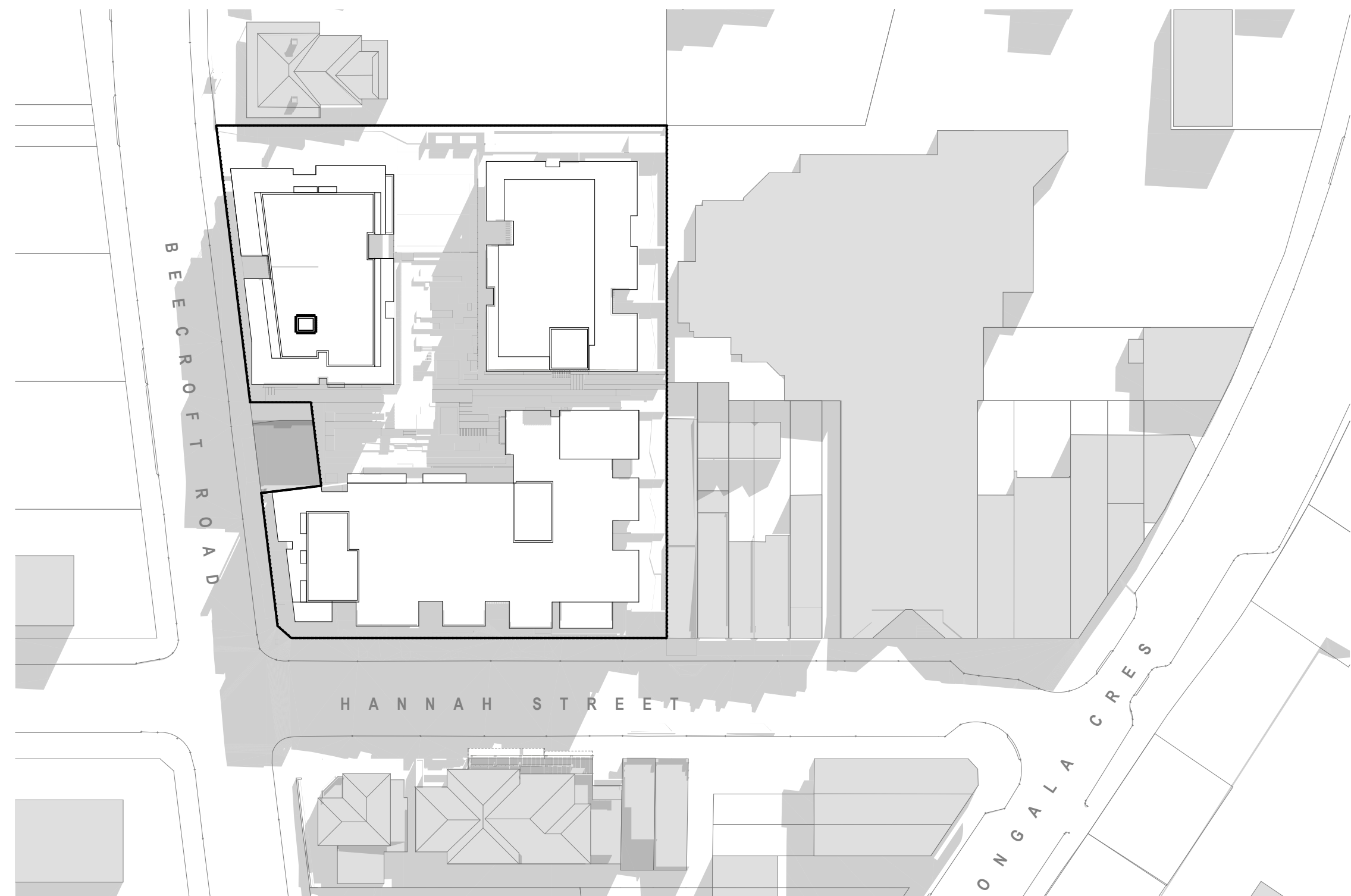
KEY PLAN



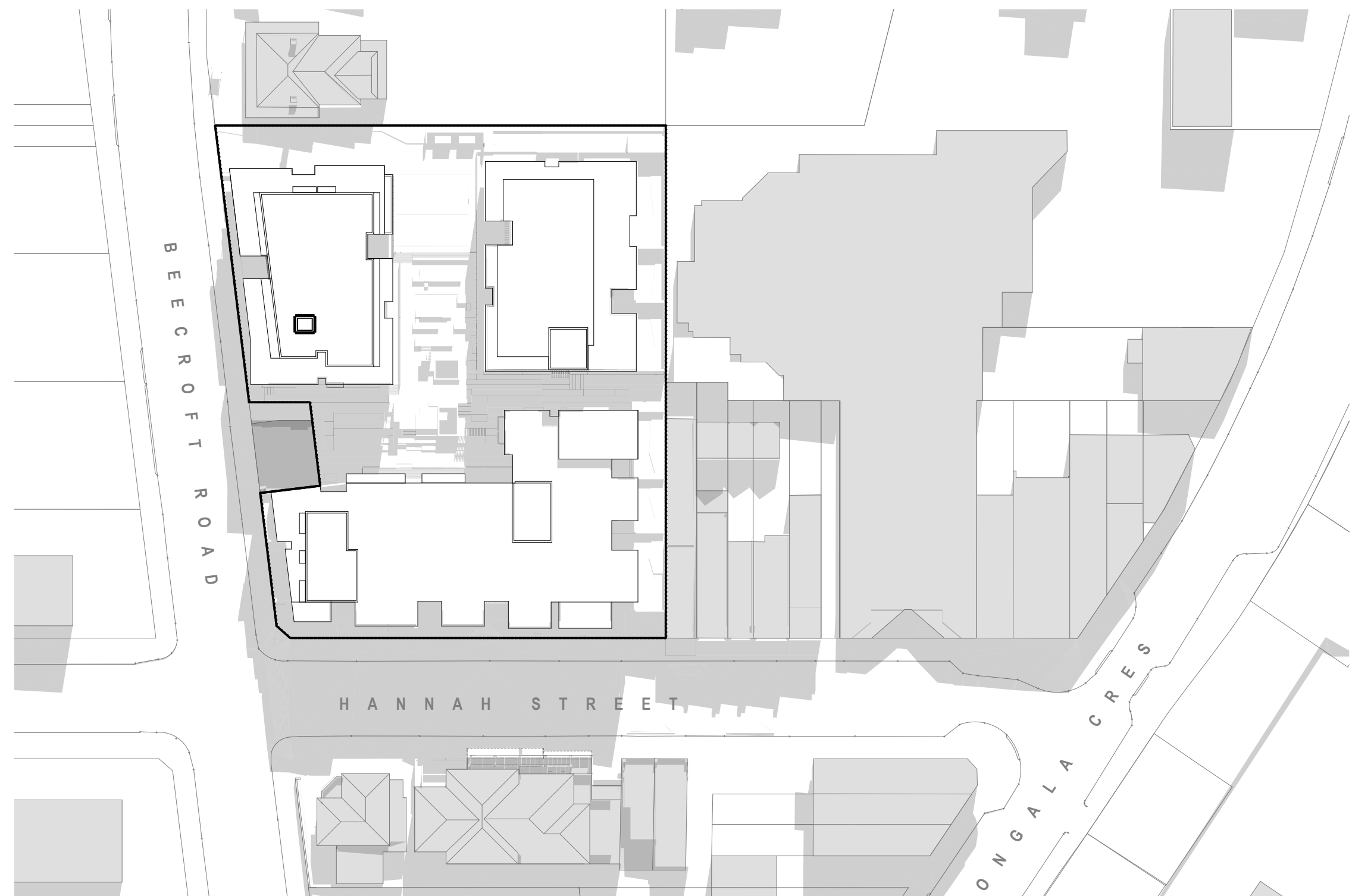
1 Winter 9am
1:750



2 Winter 10am
1:750



3 Winter 11am
1:750



4 Winter 12pm
1:750

Rev	Description	By	Date
B	Design Changes	SL/RM/HR	10/02/2014
A	DA Issue	SL/RM/HR	29/05/2013

Structural Engineer
van der Meer Consulting Pty Ltd
 T (02) 9436 0433 / F (02) 9436 1370
 Zayad.Mech@vandermeer.com.au

Mechanical Engineer
Mott Macdonald Pty Ltd
 T (02) 9891 5044 / F (02) 9891 5386
 amanda.judd@mottmac.com.au

Mechanical Engineer
Mott Macdonald Pty Ltd
 T (02) 9891 5044 / F (02) 9891 5386
 lap.ngo@mottmac.com.au

Electrical Engineer
Mott Macdonald Pty Ltd
 T (02) 9891 5044 / F (02) 9891 5386
 robert.johnson@mottmac.com.au

Chill Engineer
van der Meer Consulting Pty Ltd
 T (02) 9436 0433 / F (02) 9436 1370
 Zayad.Mech@vandermeer.com.au

Industries Architect
Oculus Pty Ltd
 T (02) 9557 5533 / F (02) 9519 8323
 roger@oculus.com.au

Architect
dko architecture (NSW) Pty Ltd
 C19 /38-48 Macarthur Street
 Ultimo, NSW, 2007, AUS
 T +61 2 8346 4500 / F +61 2 8346 4599
www.dko.com.au / info@dko.com.au

ABN: 81993706599
 Koos de Keijzer 5767 (NSW)
 David Randerson 8541 (NSW)

Client Details
Sony Bros Pty Ltd



Project
Beecroft Village
 cnr Hannah St / Beecroft Rd
 Beecroft
 NSW, 2219

Project Number
10733

Drawings
Shadow Diagrams 1

Project Status
Development Application

Scale
1:200 @ A1

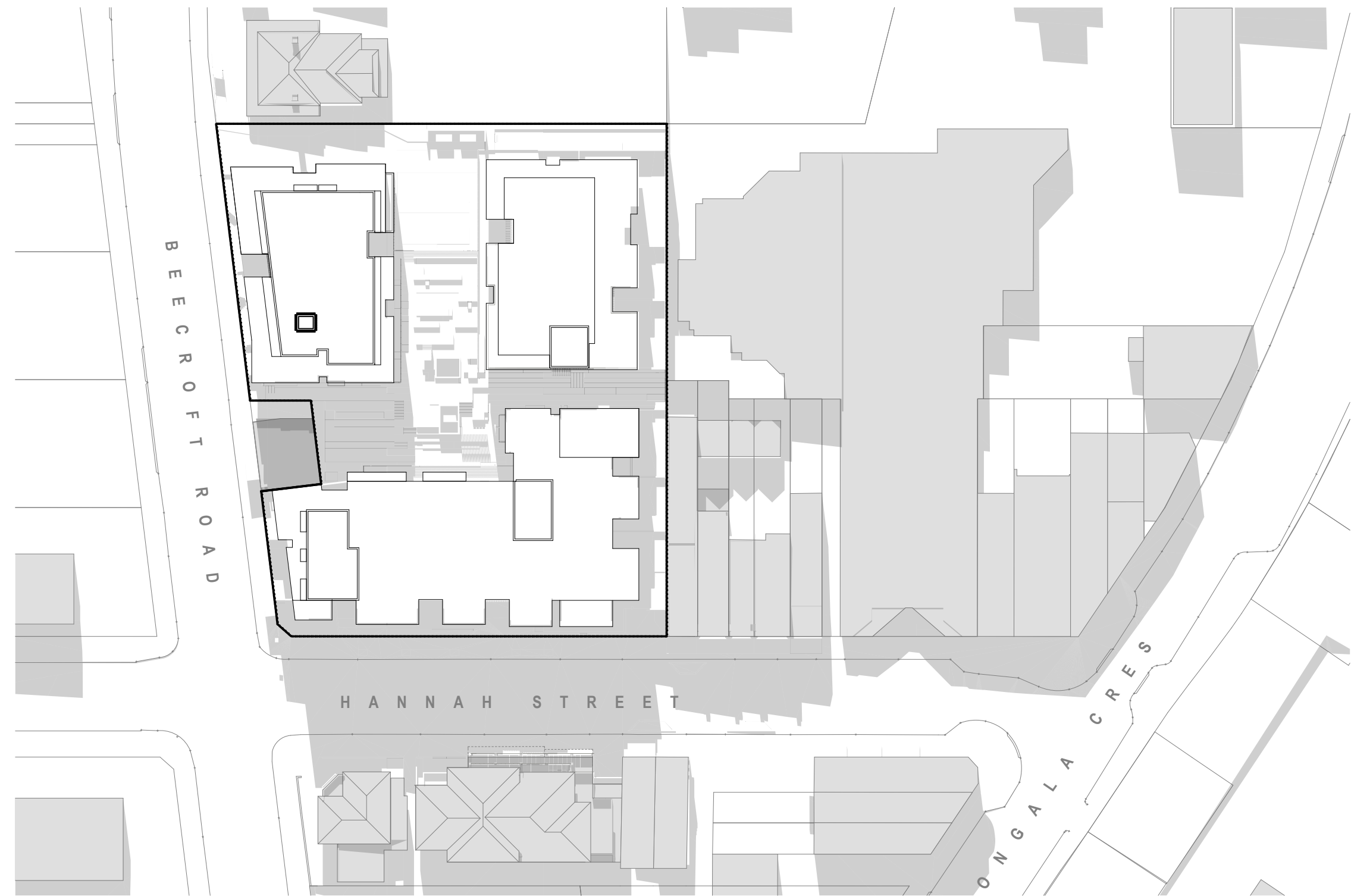
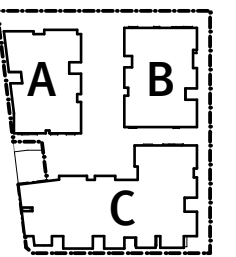
Drawn: SL/RM/HR
 Drawing Number
10733/DA/5001

Checked: RM
 Revision
B

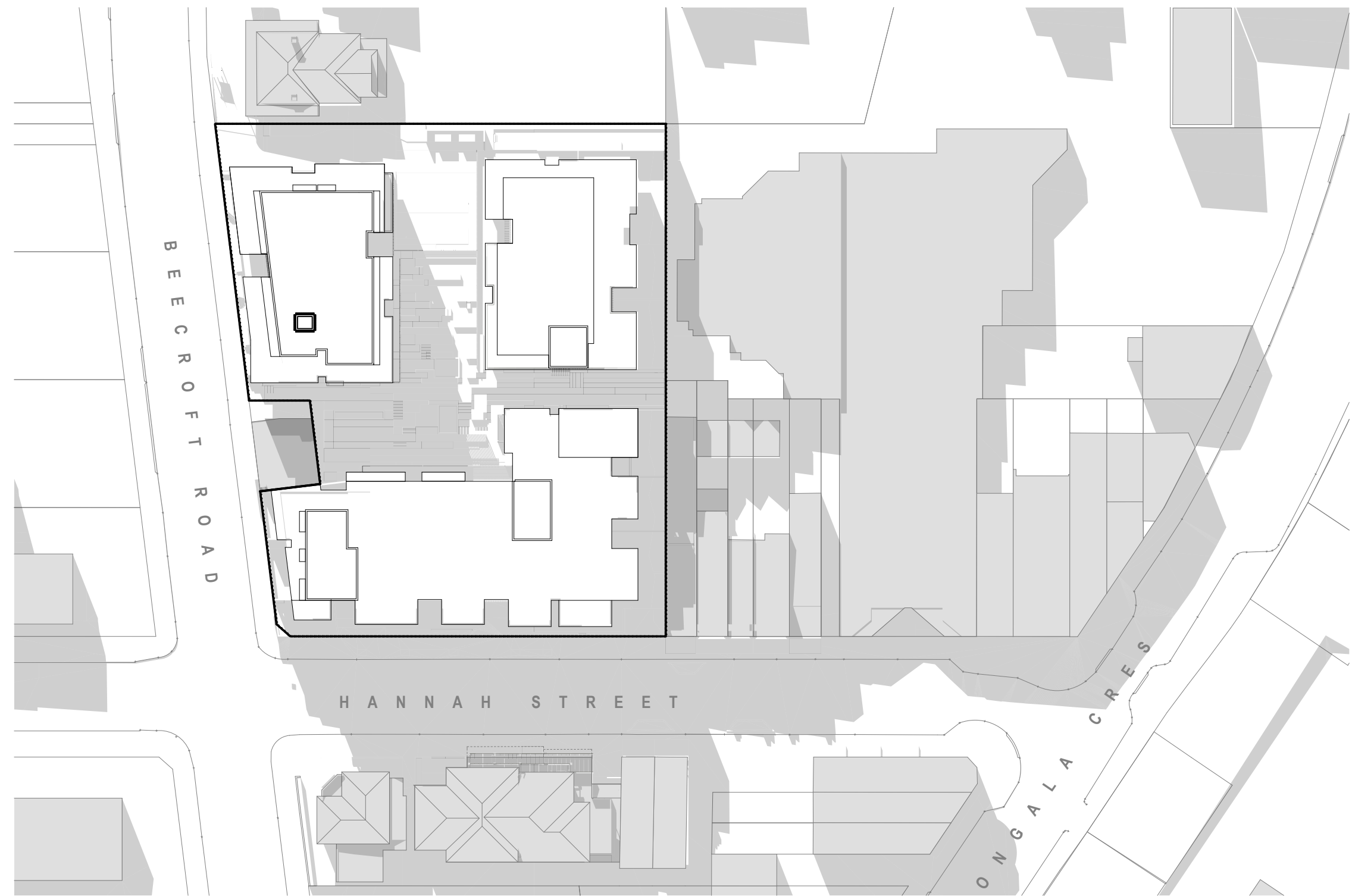
Date
10/02/2014

NOT FOR CONSTRUCTION

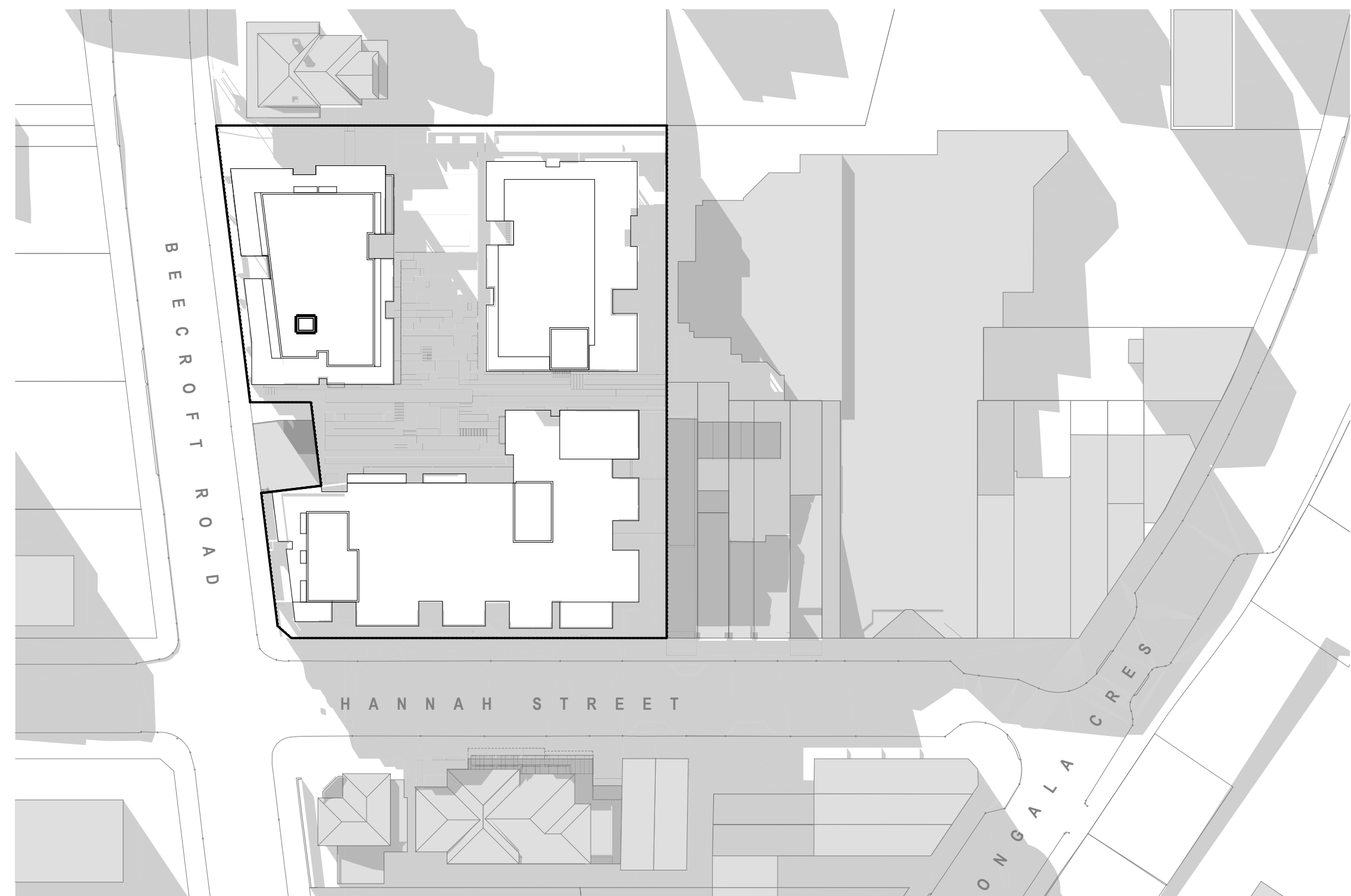
KEY PLAN



1 Winter 1pm
1:750



2 Winter 2pm
1:750



3 Winter 3pm
1:750

Rev	Description	By	Date
B	Design Changes	SL/RM/HR	10/02/2014
A	DA Issue	SL/RM/HR	29/05/2013

Structural Engineer
van der Meer Consulting Pty Ltd
 T (02) 9436 0433 / F (02) 9436 1370
 Zayad.Mechrick@vanderveer.com.au

Mechanical Engineer
Mott Macdonald Pty Ltd
 T (02) 9891 5044 / F (02) 9891 5386
 amanda.judd@mottmac.com.au

Mechanical Engineer
Mott Macdonald Pty Ltd
 T (02) 9891 5044 / F (02) 9891 5386
 lap.ngo@mottmac.com.au

Electrical Engineer
Mott Macdonald Pty Ltd
 T (02) 9891 5044 / F (02) 9891 5386
 robert.johnson@mottmac.com.au

Chill Engineer
van der Meer Consulting Pty Ltd
 T (02) 9436 0433 / F (02) 9436 1370
 Zayad.Mechrick@vanderveer.com.au

Structural Architect
Oculus Pty Ltd
 T (02) 9557 5533 / F (02) 9519 8323
 roger@oculus.com.au

Architect
dko architecture (NSW) Pty Ltd
 C19 /38-48 Macarthur Street
 Ultimo, NSW, 2007, AUS
 T +61 2 8346 4500 / F +61 2 8346 4599
www.dko.com.au / info@dko.com.au

ABN: 81963706599
 Koos de Klijzer 5767 (NSW)
 David Randerson 8541 (NSW)

Client Details
Sony Bros Pty Ltd



Project
Beecroft Village
 cnr Hannah St / Beecroft Rd
Beecroft
 NSW, 2219

Project Number
10733

Drawings
Shadow Diagrams
Shadow Diagrams 2

Project Status
Development Application

Scale
1:200 @ A1

Drawn SL/RM/HR **Checked** RM

Drawing Number 10733/DA/5002 **Revision** B

Date
10/02/2014